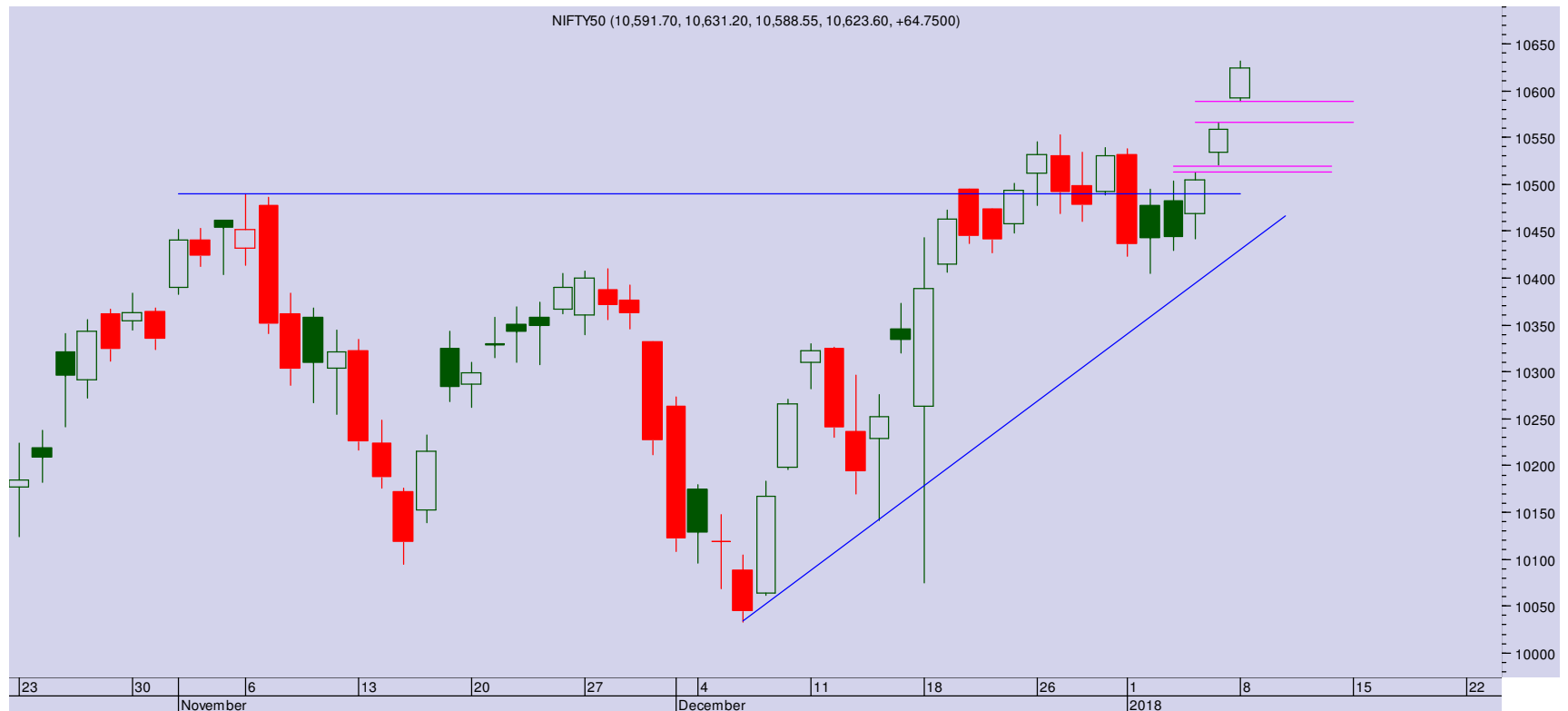


: 08-01-2018 18:45

NIFTY 10623 (65)

Global rally pushed the markets to yet another highest closing. Nifty had a big gap up opening today and it surged further to close at 10623, gaining 65 points.

The start to the week has been a on a very strong footing with Nifty cloaking gains for the third consecutive day. A big gap was left open at 10588-10566 as the markets had a gap up opening. It's a sign of continued strength and points at further gains towards 100650-10670 levels. However, second gap up move at a new breakout level suggests over bought conditions. On the higher side, 0650-10670 range act as resistance levels. Profit booking is expected to appear at higher level after big gains over three days. On the lower side, 10588 and 10566 act as crucial support. Its violation may led to further correction.



PIVOT TABLE

SCRIP	Close	Pivot	S1	S2	S3	R1	R2	R3	% OI Change
BANKNIFTY1	25637	25608	25549	25461	25401	25696	25756	25844	8.06
NIFTY1	10573	10564	10546	10518	10500	10591	10609	10637	5.71
AXISBANK1	564	562	559	554	550	568	571	576	0.91
BAJFINANCE1	1822	1804	1780	1738	1715	1846	1869	1911	1.14
DHFL1	614	608	599	584	575	623	632	647	1.86
DLF1	261	262	257	254	249	265	270	273	3.48
HDFC1	1726	1722	1712	1697	1687	1736	1746	1761	-1.46
HDFCBANK1	1864	1863	1858	1853	1848	1868	1873	1878	5.66
HINDALCO1	277	279	274	271	266	283	288	291	-2.15
IBULHSGFIN1	1205	1202	1194	1184	1176	1212	1220	1231	1.64
ICICIBANK1	313	314	311	310	307	315	318	319	8.29
INDUSINDBK1	1701	1685	1663	1624	1601	1724	1747	1786	8.52
ITC1	264	264	262	261	260	265	266	267	2.41
RELIANCE1	926	926	922	918	914	930	934	938	1.00
SBIN1	308	309	306	304	301	311	314	316	3.68
TATASTEEL1	771	771	764	757	750	778	785	793	-5.83
VEDL1	340	342	337	334	328	345	351	354	-1.68
YESBANK1	333	330	322	310	302	342	350	362	-0.25

TRADE WIZARD

SCRIP	B/S	CMP	S/L	Tgt 1	Tgt 2	Remarks
LTFH	Buy	184	180	192	195	3 days
ZEE Enter	Buy	594	589	604	610	2 Day
Himadri Special	Buy	184	170	205	215	Delivery

Share India Securities Limited
14, Dayanand Vihar, Near Kakardooma Metro Station,
Delhi-110092
research@shareindia.co.in
SEBI Research Analyst Reg no. INH100005011

Disclosure:

We, research team at Share India Securities Ltd. (SISL), authors and the names subscribed to this report, hereby certify that all of the views expressed in this research report accurately reflect our views about the subject issuer(s) or securities. SISL has no material adverse disciplinary history as on the date of publication of this report. We also certify that no part of our compensation was, is, or will be directly or indirectly related to the specific recommendation(s) or view(s) in this report.

Research Analyst or his/her relative or SISL may have any financial interest in the subject company. Also Research Analyst or his relative or SISL or its Associate may have beneficial ownership of 1% or more in the subject company at the end of the month immediately preceding the date of publication of the Research Report. Further Research Analyst or his relative or SISL or its associate does not have any material conflict of interest.

SISL is a SEBI Registered Research Analyst having registration no. INH100005011.

Disclaimer:

This report has been prepared by SISL and is meant for sole use by the recipient and not for circulation. The information and opinions contained herein have been compiled or arrived at, based upon information obtained in good faith from sources believed to be reliable. Such information has not been independently verified and no guaranty, representation of warranty, express or implied, is made as to its accuracy, completeness or correctness. All such information and opinions are subject to change without notice. This document is for information purposes only. Descriptions of any company or companies or their securities mentioned herein are not intended to be complete and this document is not, and should not be construed as an offer or solicitation of an offer, to buy or sell any securities or other financial instruments.

This report is not directed to, or intended for display, downloading, printing, reproducing or for distribution to or use by, any person or entity who is a citizen or resident or located in any locality, state, country or other jurisdiction where such distribution, publication, reproduction, availability or use would be contrary to law or regulation or what would subject SISL or its affiliates to any registration or licensing requirement within such jurisdiction.

If this report is inadvertently sent or has reached any individual in such country, especially, USA, the same may be ignored and brought to the attention of the sender. This document may not be reproduced, distributed or published for any purposes without prior written approval of SISL.

Foreign currencies denominated securities, wherever mentioned, are subject to exchange rate fluctuations, which could have an adverse effect on their value or price, or the income derived from them. In addition, investors in securities such as ADRs, the values of which are influenced by foreign currencies effectively assume currency risk.

It should not be considered to be taken as an offer to sell or a solicitation to buy any security. SISL may from time to time solicit from, or perform broking, or other services for, any company mentioned in this mail and/or its attachments.

SISL and its affiliated company(ies), their directors and employees may; (a) from time to time, have a long or short position in, and buy or sell the securities of the company(ies) mentioned herein or (b) be engaged in any other transaction involving such securities and earn brokerage or other compensation or act as a market maker in the financial instruments of the company(ies) discussed herein or act as an advisor or lender/borrower to such company(ies) or may have any other potential conflict of interests with respect to any recommendation and other related information and opinions.

SISL, its directors, analysts or employees do not take any responsibility, financial or otherwise, of the losses or the damages sustained due to the investments made or any action taken on basis of this report, including but not restricted to, fluctuation in the prices of shares and bonds, changes in the currency rates, diminution in the NAVs, reduction in the dividend or income, etc.

SISL and other group companies, its directors, associates, employees may have various positions in any of the stocks, securities and financial instruments dealt in the report, or may make sell or purchase or other deals in these securities from time to time or may deal in other securities of the companies / organizations described in this report.

SISL or its associates might have managed or co-managed public offering of securities for the subject company or might have been mandated by the subject company for any other assignment in the past twelvemonths.

SISL or its associates might have received any compensation from the companies mentioned in the report during the period preceding twelve months from the date of this report for services in respect of managing or co-managing public offerings, corporate finance, investment banking or merchant banking, brokerage services or other advisory service in a merger or specific transaction in the normal course of business.

SISL or its analysts did not receive any compensation or other benefits from the companies mentioned in the report or third party in connection with preparation of the research report. Accordingly, neither SISL nor Research Analysts have any material conflict of interest at the time of publication of this report. Compensation of our Research Analysts is not based on any specific merchant banking, investment banking or brokerage service transactions. SISL may have issued other reports that are inconsistent with and reach different conclusion from the information presented in this report.

Research entity has not been engaged in market making activity for the subject company. Research analyst has not served as an officer, director or employee of the subject company. We have not received any compensation/benefits from the subject company or third party in connection with the Research Report.

SISL, SEBI Reg. No.:INB/F/E 231079832, INB/F/E 011079838, IN-DP-32-2015, AMFI Reg. No. ARN: 78041, SEBI Research Analyst Reg. No.: INH100005011, CIN - U67120UP1994PLC050209