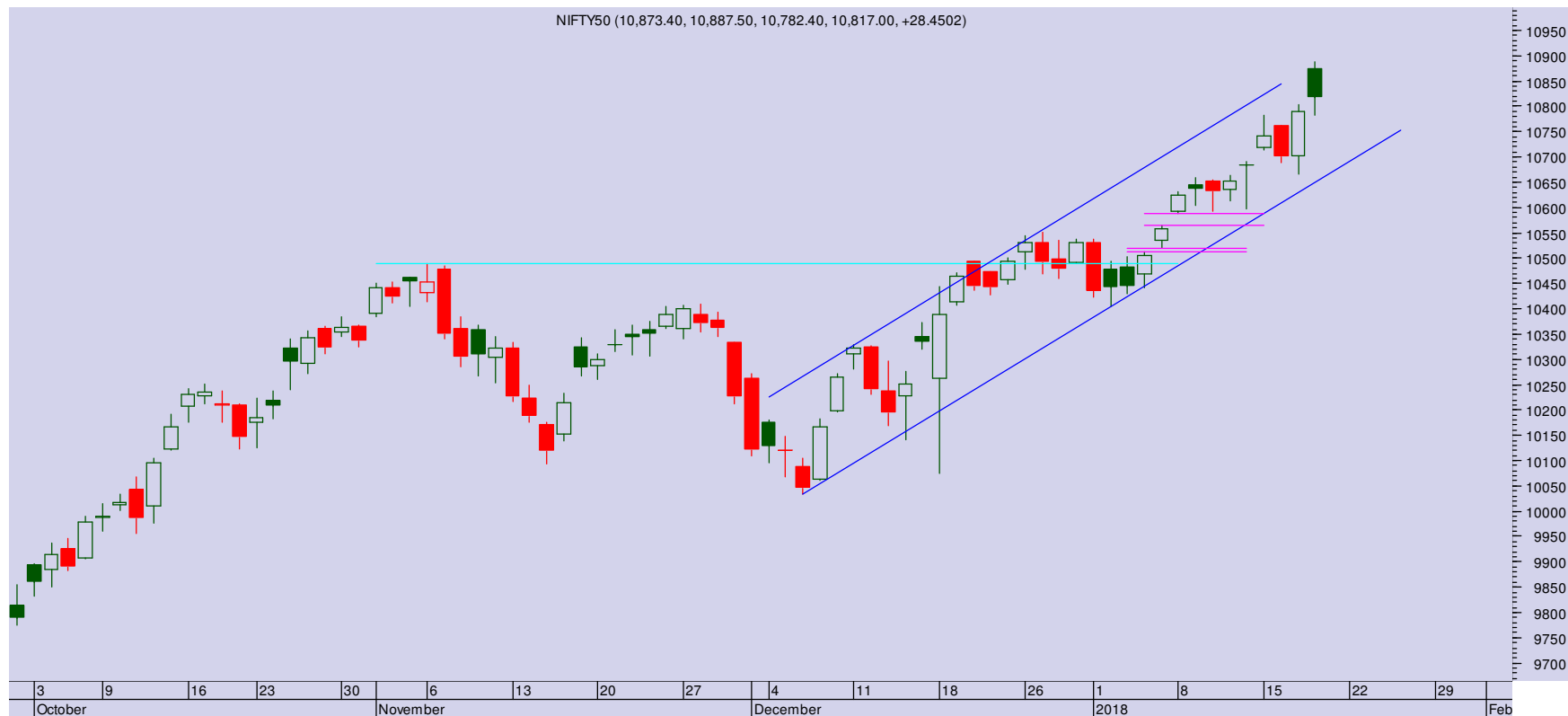


: 18-01-2018 19:27

## NIFTY 10817 (28)

High volatility was witnessed today even as market indices hit new highs while broader markets witnessed steep losses. After opening higher and touching a high of 10887, Nifty pared some gains to end at 10817, gaining 28 points.

Once again, Nifty had a big gap up opening but as very stocks have hit new highs along with Nifty, the rally sustaining for long is questionable. Whenever, the volatility increases near highs, these are the signs of market tops. We have advising caution since last few days and once again reiterate the same caution at higher levels. On the lower side, 10780 is immediate support. Violation will push the index towards 10740-10700 levels. Tomorrow, the markets are expected to remain volatile.



## PIVOT TABLE

SCRIP	Close	Pivot	S1	S2	S3	R1	R2	R3	% OI Change
BANKNIFTY1	26499	26551	26334	26168	25951	26717	26934	27100	-0.60
NIFTY1	10811	10819	10765	10720	10666	10865	10919	10964	0.01
AXISBANK1	584	586	576	567	557	595	605	614	-1.56
BAJFINANCE1	1662	1677	1640	1618	1580	1700	1737	1759	-0.74
DHFL1	590	596	577	565	546	609	627	640	0.12
DLF1	251	254	243	236	225	262	273	280	-0.10
HDFC1	1894	1892	1868	1841	1817	1918	1942	1969	7.96
HDFCBANK1	1932	1932	1912	1891	1871	1953	1973	1994	-7.44
HINDALCO1	254	257	249	245	237	262	269	274	-2.40
IBULHSGFIN1	1248	1245	1221	1194	1170	1272	1295	1322	7.44
ICICIBANK1	346	347	342	339	334	350	355	359	-0.30
INDUSINDBK1	1673	1678	1655	1638	1616	1695	1717	1735	-8.26
ITC1	273	272	268	263	260	276	280	285	-3.94
RELIANCE1	922	923	915	909	902	929	937	943	-3.36
SBIN1	303	307	296	289	278	314	326	333	-10.33
TATASTEEL1	753	760	739	725	704	774	795	809	-3.94
VEDL1	326	328	320	314	306	334	342	348	-7.69
YESBANK1	340	343	330	319	306	354	367	378	0.22

## TRADE WIZARD

SCRIP	B/S	CMP	S/L	Tgt 1	Tgt 2	Remarks
Canfin Homes	Sell	462	470	450	445	1 Day
Tata Motors	Sell	419	425	410	405	1 day
India Cement	Sell	183	187	178	175	1 Day

Share India Securities Limited  
14, Dayanand Vihar, Near Kakardooma Metro Station,  
Delhi-110092  
[research@shareindia.co.in](mailto:research@shareindia.co.in)  
SEBI Research Analyst Reg no. INH100005011

**Disclosure:**

We, research team at Share India Securities Ltd. (SISL), authors and the names subscribed to this report, hereby certify that all of the views expressed in this research report accurately reflect our views about the subject issuer(s) or securities. SISL has no material adverse disciplinary history as on the date of publication of this report. We also certify that no part of our compensation was, is, or will be directly or indirectly related to the specific recommendation(s) or view(s) in this report.

Research Analyst or his/her relative or SISL may have any financial interest in the subject company. Also Research Analyst or his relative or SISL or its Associate may have beneficial ownership of 1% or more in the subject company at the end of the month immediately preceding the date of publication of the Research Report. Further Research Analyst or his relative or SISL or its associate does not have any material conflict of interest.

SISL is a SEBI Registered Research Analyst having registration no. INH100005011.

**Disclaimer:**

This report has been prepared by SISL and is meant for sole use by the recipient and not for circulation. The information and opinions contained herein have been compiled or arrived at, based upon information obtained in good faith from sources believed to be reliable. Such information has not been independently verified and no guaranty, representation of warranty, express or implied, is made as to its accuracy, completeness or correctness. All such information and opinions are subject to change without notice. This document is for information purposes only. Descriptions of any company or companies or their securities mentioned herein are not intended to be complete and this document is not, and should not be construed as an offer or solicitation of an offer, to buy or sell any securities or other financial instruments.

This report is not directed to, or intended for display, downloading, printing, reproducing or for distribution to or use by, any person or entity who is a citizen or resident or located in any locality, state, country or other jurisdiction where such distribution, publication, reproduction, availability or use would be contrary to law or regulation or what would subject SISL or its affiliates to any registration or licensing requirement within such jurisdiction.

If this report is inadvertently sent or has reached any individual in such country, especially, USA, the same may be ignored and brought to the attention of the sender. This document may not be reproduced, distributed or published for any purposes without prior written approval of SISL.

Foreign currencies denominated securities, wherever mentioned, are subject to exchange rate fluctuations, which could have an adverse effect on their value or price, or the income derived from them. In addition, investors in securities such as ADRs, the values of which are influenced by foreign currencies effectively assume currency risk.

It should not be considered to be taken as an offer to sell or a solicitation to buy any security. SISL may from time to time solicit from, or perform broking, or other services for, any company mentioned in this mail and/or its attachments.

SISL and its affiliated company(ies), their directors and employees may; (a) from time to time, have a long or short position in, and buy or sell the securities of the company(ies) mentioned herein or (b) be engaged in any other transaction involving such securities and earn brokerage or other compensation or act as a market maker in the financial instruments of the company(ies) discussed herein or act as an advisor or lender/borrower to such company(ies) or may have any other potential conflict of interests with respect to any recommendation and other related information and opinions.

SISL, its directors, analysts or employees do not take any responsibility, financial or otherwise, of the losses or the damages sustained due to the investments made or any action taken on basis of this report, including but not restricted to, fluctuation in the prices of shares and bonds, changes in the currency rates, diminution in the NAVs, reduction in the dividend or income, etc.

SISL and other group companies, its directors, associates, employees may have various positions in any of the stocks, securities and financial instruments dealt in the report, or may make sell or purchase or other deals in these securities from time to time or may deal in other securities of the companies / organizations described in this report.

SISL or its associates might have managed or co-managed public offering of securities for the subject company or might have been mandated by the subject company for any other assignment in the past twelvemonths.

SISL or its associates might have received any compensation from the companies mentioned in the report during the period preceding twelve months from the date of this report for services in respect of managing or co-managing public offerings, corporate finance, investment banking or merchant banking, brokerage services or other advisory service in a merger or specific transaction in the normal course of business.

SISL or its analysts did not receive any compensation or other benefits from the companies mentioned in the report or third party in connection with preparation of the research report. Accordingly, neither SISL nor Research Analysts have any material conflict of interest at the time of publication of this report. Compensation of our Research Analysts is not based on any specific merchant banking, investment banking or brokerage service transactions. SISL may have issued other reports that are inconsistent with and reach different conclusion from the information presented in this report.

Research entity has not been engaged in market making activity for the subject company. Research analyst has not served as an officer, director or employee of the subject company. We have not received any compensation/benefits from the subject company or third party in connection with the Research Report.

SISL, SEBI Reg. No.:INB/F/E 231079832, INB/F/E 011079838, IN-DP-32-2015, AMFI Reg. No. ARN: 78041, SEBI Research Analyst Reg. No.: INH100005011, CIN - U67120UP1994PLC050209