

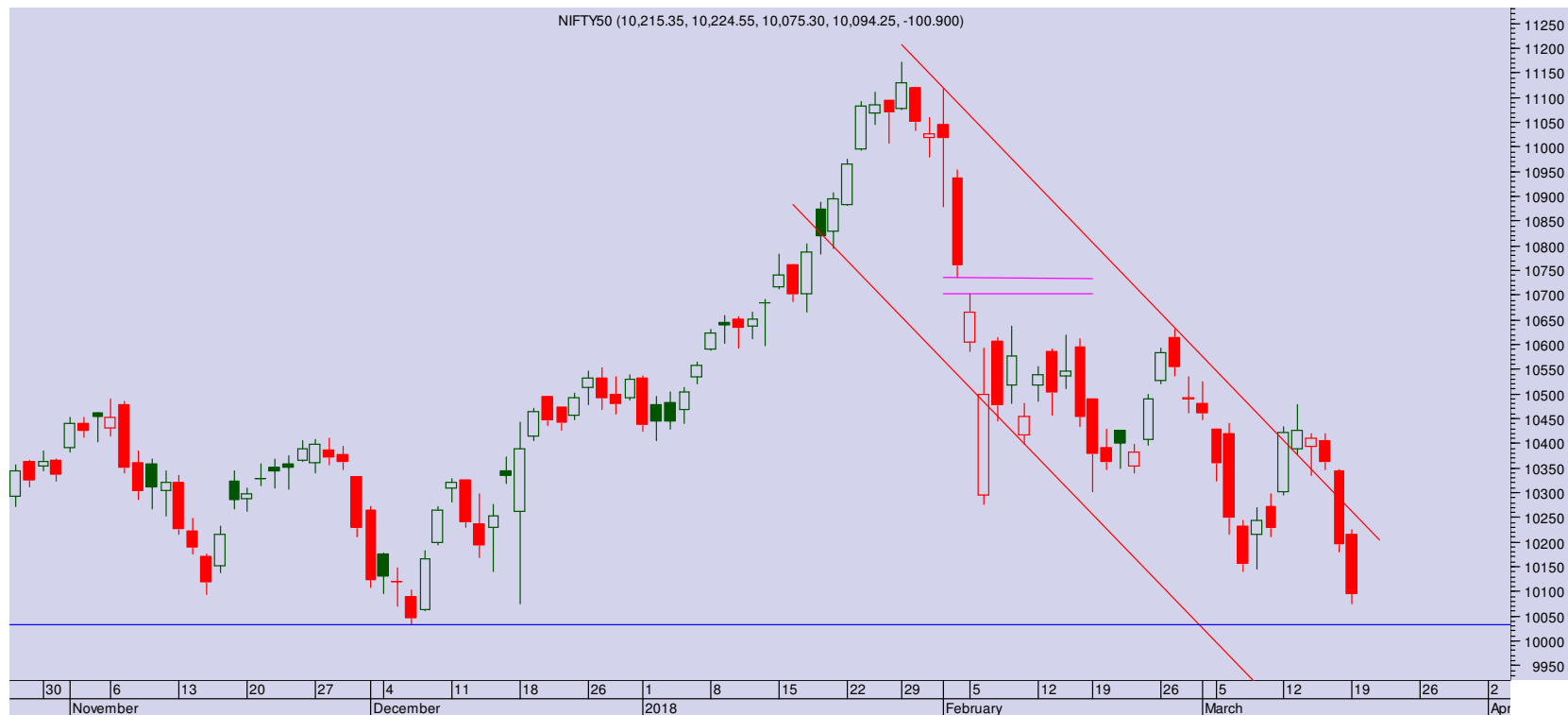
Date: 19-03-2018 18:30

## NIFTY 10094 (-101)

Strategy		S/L	Tgt 1	Tgt 2	Remarks
HDFC Bank 1840 PE	Buy at 12-13 range	8	20	24	Violation of 1850 leads to fresh weakness

Unrelenting selling pressure pounded the market afresh on the first day of a new week following sharp losses last Friday. Nifty ended 101 points lower at 10095.

The steep fall over last two days has created a panic situation in the market. For the second day, a big black candle was formed, violating the 200 DMA decisively and continuing to form the lower top, lower bottom formation, reflecting the weakness. Market is expected to continue to witness weakness tomorrow. Below 10070, the index would test 10033, a previous low touched in Dec'17. On the higher side, 10140 is now strong resistance.



## PIVOT TABLE

SCRIP	Close	Pivot	S1	S2	S3	R1	R2	R3	% OI Change
BANKNIFTY1	24337	24421	24172	24008	23759	24586	24835	24999	4.55
NIFTY1	10123	10154	10071	10020	9937	10205	10288	10339	-3.16
AXISBANK1	521	522	517	513	508	526	530	534	-0.59
BAJFINANCE1	1641	1659	1617	1593	1551	1683	1725	1749	2.90
DHFL1	500	504	494	488	477	511	521	527	-1.94
DLF1	214	217	208	202	193	223	232	238	-1.02
HDFC1	1780	1788	1768	1755	1735	1801	1821	1834	-2.02
HDFCBANK1	1854	1856	1847	1840	1831	1862	1871	1878	-2.12
HINDALCO1	215	217	211	206	199	222	229	233	0.55
IBULHSGFIN1	1193	1198	1182	1170	1154	1210	1226	1238	0.34
ICICIBANK1	296	297	292	288	283	301	305	309	0.70
INDUSINDBK1	1726	1728	1717	1708	1697	1737	1749	1758	-3.28
ITC1	260	261	259	257	255	263	265	267	-0.72
RELIANCE1	899	901	894	888	881	907	914	919	-0.73
SBIN1	249	250	245	242	238	253	258	261	-1.02
TATASTEEL1	578	586	567	557	539	596	614	624	-3.58
VEDL1	287	288	282	277	272	292	298	302	-1.78
YESBANK1	306	309	301	296	288	314	322	327	3.86

## TRADE WIZARD

SCRIP	B/S	CMP	S/L	Tgt 1	Tgt 2	Remarks
Arvind Ltd	Sell	386	392	378	375	1 Day
Tech Mahi	Sell	609	616	600	595	1 Day
GAIL	Sell	442	447	435	432	1 Day

Prepared by: Nirav Vakharia, Head Research

Share India Securities Limited  
14, Dayanand Vihar, Near Kakardooma Metro Station,  
Delhi-110092  
[research@shareindia.co.in](mailto:research@shareindia.co.in)  
SEBI Research Analyst Reg no. INH100005011

**Disclosure:**

We, research team at Share India Securities Ltd. (SISL), authors and the names subscribed to this report, hereby certify that all of the views expressed in this research report accurately reflect our views about the subject issuer(s) or securities. SISL has no material adverse disciplinary history as on the date of publication of this report. We also certify that no part of our compensation was, is, or will be directly or indirectly related to the specific recommendation(s) or view(s) in this report.

Research Analyst or his/her relative or SISL may have any financial interest in the subject company. Also Research Analyst or his relative or SISL or its Associate may have beneficial ownership of 1% or more in the subject company at the end of the month immediately preceding the date of publication of the Research Report. Further Research Analyst or his relative or SISL or its associate does not have any material conflict of interest.

SISL is a SEBI Registered Research Analyst having registration no. INH100005011.

**Disclaimer:**

This report has been prepared by SISL and is meant for sole use by the recipient and not for circulation. The information and opinions contained herein have been compiled or arrived at, based upon information obtained in good faith from sources believed to be reliable. Such information has not been independently verified and no guaranty, representation of warranty, express or implied, is made as to its accuracy, completeness or correctness. All such information and opinions are subject to change without notice. This document is for information purposes only. Descriptions of any company or companies or their securities mentioned herein are not intended to be complete and this document is not, and should not be construed as an offer or solicitation of an offer, to buy or sell any securities or other financial instruments.

This report is not directed to, or intended for display, downloading, printing, reproducing or for distribution to or use by, any person or entity who is a citizen or resident or located in any locality, state, country or other jurisdiction where such distribution, publication, reproduction, availability or use would be contrary to law or regulation or what would subject SISL or its affiliates to any registration or licensing requirement within such jurisdiction.

If this report is inadvertently sent or has reached any individual in such country, especially, USA, the same may be ignored and brought to the attention of the sender. This document may not be reproduced, distributed or published for any purposes without prior written approval of SISL.

Foreign currencies denominated securities, wherever mentioned, are subject to exchange rate fluctuations, which could have an adverse effect on their value or price, or the income derived from them. In addition, investors in securities such as ADRs, the values of which are influenced by foreign currencies effectively assume currency risk.

It should not be considered to be taken as an offer to sell or a solicitation to buy any security. SISL may from time to time solicit from, or perform broking, or other services for, any company mentioned in this mail and/or its attachments.

SISL and its affiliated company(ies), their directors and employees may; (a) from time to time, have a long or short position in, and buy or sell the securities of the company(ies) mentioned herein or (b) be engaged in any other transaction involving such securities and earn brokerage or other compensation or act as a market maker in the financial instruments of the company(ies) discussed herein or act as an advisor or lender/borrower to such company(ies) or may have any other potential conflict of interests with respect to any recommendation and other related information and opinions.

SISL, its directors, analysts or employees do not take any responsibility, financial or otherwise, of the losses or the damages sustained due to the investments made or any action taken on basis of this report, including but not restricted to, fluctuation in the prices of shares and bonds, changes in the currency rates, diminution in the NAVs, reduction in the dividend or income, etc.

SISL and other group companies, its directors, associates, employees may have various positions in any of the stocks, securities and financial instruments dealt in the report, or may make sell or purchase or other deals in these securities from time to time or may deal in other securities of the companies / organizations described in this report.

SISL or its associates might have managed or co-managed public offering of securities for the subject company or might have been mandated by the subject company for any other assignment in the past twelve months.

SISL or its associates might have received any compensation from the companies mentioned in the report during the period preceding twelve months from the date of this report for services in respect of managing or co-managing public offerings, corporate finance, investment banking or merchant banking, brokerage services or other advisory service in a merger or specific transaction in the normal course of business.

SISL or its analysts did not receive any compensation or other benefits from the companies mentioned in the report or third party in connection with preparation of the research report. Accordingly, neither SISL nor Research Analysts have any material conflict of interest at the time of publication of this report. Compensation of our Research Analysts is not based on any specific merchant banking, investment banking or brokerage service transactions. SISL may have issued other reports that are inconsistent with and reach different conclusion from the information presented in this report.

Research entity has not been engaged in market making activity for the subject company. Research analyst has not served as an officer, director or employee of the subject company. We have not received any compensation/benefits from the subject company or third party in connection with the Research Report.

SISL, SEBI Reg. No.: INB/F/E 231079832, INB/F/E 011079838, IN-DP-32-2015, AMFI Reg. No. ARN: 78041, SEBI Research Analyst Reg. No.: INH100005011, CIN - U67120UP1994PLC050209