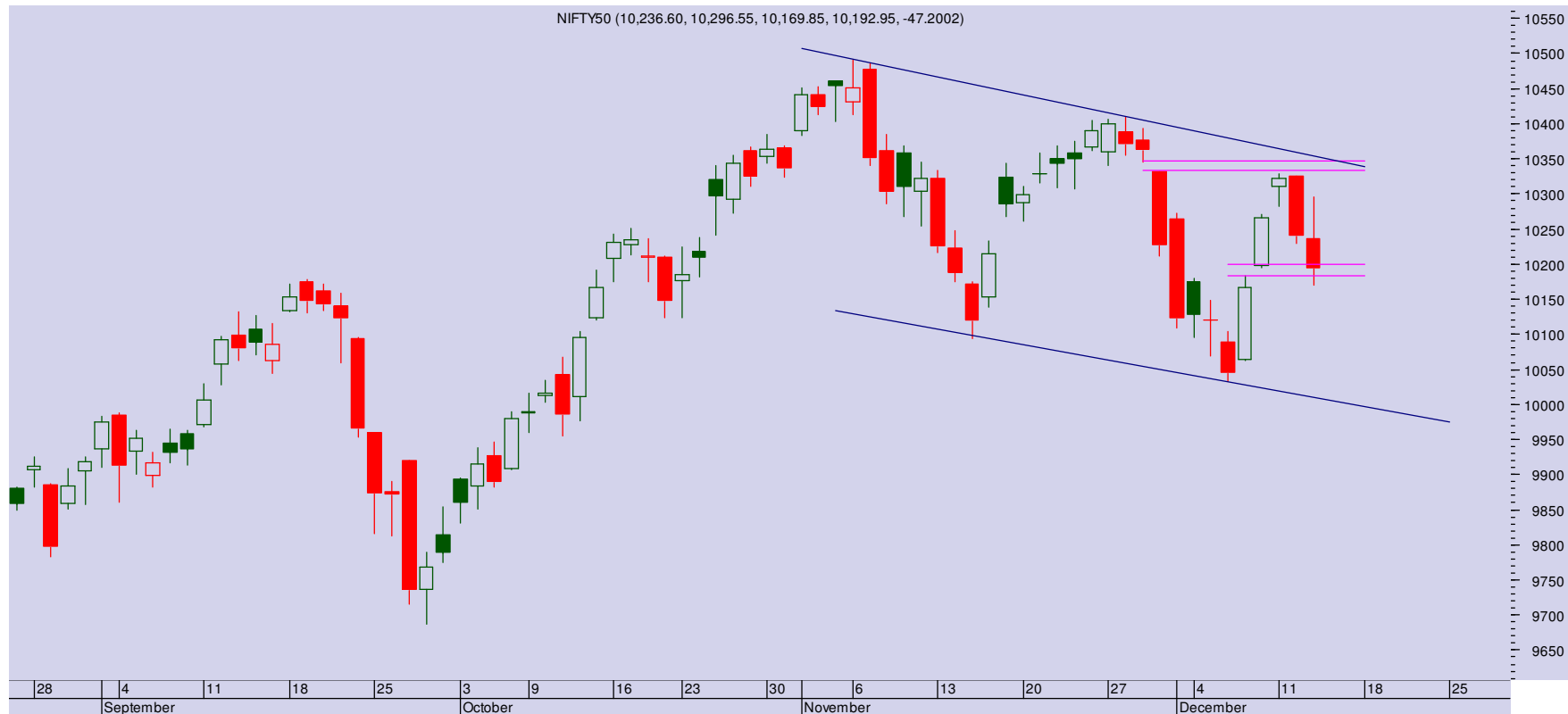


Date: 13-12-2017 19:38

NIFTY 10192 (-47)

Huge volatility and wild swings ruled the day as markets faced some uncertainty ahead of US FOMC meeting scheduled tonight in the US where it is widely expected to raise rates. Nifty ended at 10192, losing 47 points.

Nifty witnessed steep rise and drop today and finally ended with a loss below 10200. The forthcoming news flows are expected to play a big role in deciding next course of the trend. Yesterday's reaction from the crucial resistance levels and two consecutive drops suggests market volatility to continue at least for next two – three days as well. It seems that the index would continue to trade inside the current range of 10100-10300 for the time being.



PIVOT TABLE

SCRIP	Close	Pivot	S1	S2	S3	R1	R2	R3	% OI Change
BANKNIFTY1	25038	25116	24884	24730	24498	25270	25502	25656	0.04
NIFTY1	10215	10246	10159	10103	10017	10302	10389	10445	0.39
AXISBANK1	536	538	532	528	522	542	549	553	-1.63
BAJFINANCE1	1675	1683	1658	1641	1616	1700	1725	1742	2.56
DHFL1	579	583	572	564	553	591	602	610	1.53
DLF1	229	231	225	221	214	235	241	246	-2.36
HDFC1	1701	1705	1688	1675	1658	1718	1735	1748	-0.18
HDFCBANK1	1822	1829	1811	1799	1780	1841	1859	1871	-0.68
HINDALCO1	235	236	232	230	226	239	243	245	-2.62
IBULHSGFIN1	1184	1191	1173	1163	1145	1202	1220	1230	-1.41
ICICIBANK1	304	305	301	297	292	309	314	317	0.46
INDUSINDBK1	1647	1650	1636	1625	1611	1661	1675	1686	-1.07
ITC1	260	261	258	256	253	263	266	268	-0.31
RELIANCE1	918	921	913	907	899	926	934	940	-0.80
SBIN1	314	315	311	307	303	318	323	326	-2.64
TATASTEEL1	684	686	677	669	660	693	703	710	1.10
VEDL1	285	287	280	275	268	292	299	304	3.04
YESBANK1	303	305	301	298	295	307	311	313	0.44

TRADE WIZARD

SCRIP	B/S	CMP	S/L	Tgt 1	Tgt 2	Remarks
SBI	Sell	313	317	307	305	1 day
LT	Sell	1189	1102	1075	1070	1 Day

Share India Securities Limited
14, Dayanand Vihar, Near Kakardooma Metro Station,
Delhi-110092
research@shareindia.co.in
SEBI Research Analyst Reg no. INH100005011

Disclosure:

We, research team at Share India Securities Ltd. (SISL), authors and the names subscribed to this report, hereby certify that all of the views expressed in this research report accurately reflect our views about the subject issuer(s) or securities. SISL has no material adverse disciplinary history as on the date of publication of this report. We also certify that no part of our compensation was, is, or will be directly or indirectly related to the specific recommendation(s) or view(s) in this report.

Research Analyst or his/her relative or SISL may have any financial interest in the subject company. Also Research Analyst or his relative or SISL or its Associate may have beneficial ownership of 1% or more in the subject company at the end of the month immediately preceding the date of publication of the Research Report. Further Research Analyst or his relative or SISL or its associate does not have any material conflict of interest.

SISL is a SEBI Registered Research Analyst having registration no. INH100005011.

Disclaimer:

This report has been prepared by SISL and is meant for sole use by the recipient and not for circulation. The information and opinions contained herein have been compiled or arrived at, based upon information obtained in good faith from sources believed to be reliable. Such information has not been independently verified and no guaranty, representation of warranty, express or implied, is made as to its accuracy, completeness or correctness. All such information and opinions are subject to change without notice. This document is for information purposes only. Descriptions of any company or companies or their securities mentioned herein are not intended to be complete and this document is not, and should not be construed as an offer or solicitation of an offer, to buy or sell any securities or other financial instruments.

This report is not directed to, or intended for display, downloading, printing, reproducing or for distribution to or use by, any person or entity who is a citizen or resident or located in any locality, state, country or other jurisdiction where such distribution, publication, reproduction, availability or use would be contrary to law or regulation or what would subject SISL or its affiliates to any registration or licensing requirement within such jurisdiction.

If this report is inadvertently sent or has reached any individual in such country, especially, USA, the same may be ignored and brought to the attention of the sender. This document may not be reproduced, distributed or published for any purposes without prior written approval of SISL.

Foreign currencies denominated securities, wherever mentioned, are subject to exchange rate fluctuations, which could have an adverse effect on their value or price, or the income derived from them. In addition, investors in securities such as ADRs, the values of which are influenced by foreign currencies effectively assume currency risk.

It should not be considered to be taken as an offer to sell or a solicitation to buy any security. SISL may from time to time solicit from, or perform broking, or other services for, any company mentioned in this mail and/or its attachments.

SISL and its affiliated company(ies), their directors and employees may; (a) from time to time, have a long or short position in, and buy or sell the securities of the company(ies) mentioned herein or (b) be engaged in any other transaction involving such securities and earn brokerage or other compensation or act as a market maker in the financial instruments of the company(ies) discussed herein or act as an advisor or lender/borrower to such company(ies) or may have any other potential conflict of interests with respect to any recommendation and other related information and opinions.

SISL, its directors, analysts or employees do not take any responsibility, financial or otherwise, of the losses or the damages sustained due to the investments made or any action taken on basis of this report, including but not restricted to, fluctuation in the prices of shares and bonds, changes in the currency rates, diminution in the NAVs, reduction in the dividend or income, etc.

SISL and other group companies, its directors, associates, employees may have various positions in any of the stocks, securities and financial instruments dealt in the report, or may make sell or purchase or other deals in these securities from time to time or may deal in other securities of the companies / organizations described in this report.

SISL or its associates might have managed or co-managed public offering of securities for the subject company or might have been mandated by the subject company for any other assignment in the past twelve months.

SISL or its associates might have received any compensation from the companies mentioned in the report during the period preceding twelve months from the date of this report for services in respect of managing or co-managing public offerings, corporate finance, investment banking or merchant banking, brokerage services or other advisory service in a merger or specific transaction in the normal course of business.

SISL or its analysts did not receive any compensation or other benefits from the companies mentioned in the report or third party in connection with preparation of the research report. Accordingly, neither SISL nor Research Analysts have any material conflict of interest at the time of publication of this report. Compensation of our Research Analysts is not based on any specific merchant banking, investment banking or brokerage service transactions. SISL may have issued other reports that are inconsistent with and reach different conclusion from the information presented in this report.

Research entity has not been engaged in market making activity for the subject company. Research analyst has not served as an officer, director or employee of the subject company. We have not received any compensation/benefits from the subject company or third party in connection with the Research Report.

SISL, SEBI Reg. No.: INB/F/E 231079832, INB/F/E 011079838, IN-DP-32-2015, AMFI Reg. No. ARN: 78041, SEBI Research Analyst Reg. No.: INH100005011, CIN - U67120UP1994PLC050209