

DAILY
MARKET STRATEGIES

Dated: 06-06-2018 19:14

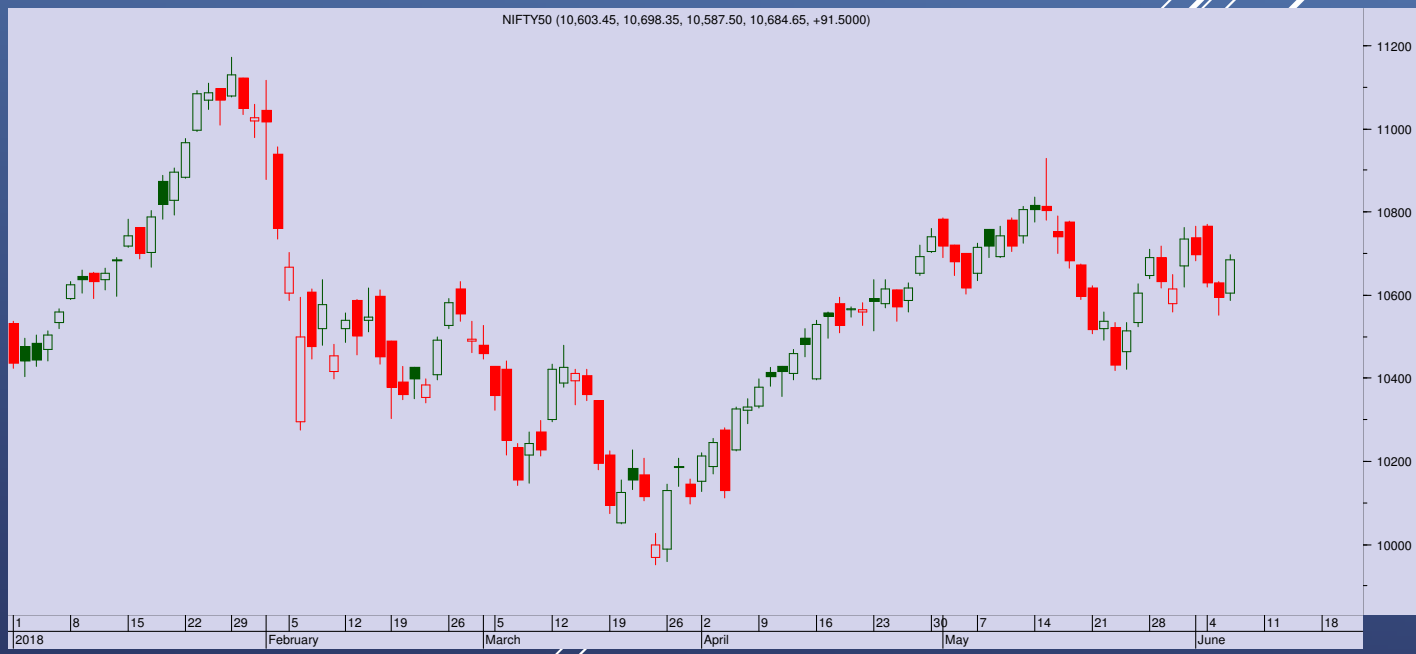
Top Trade

NIFTY – 10684

□ Nifty range 10620-10700-10730

BANKNIFTY - 26367

□ Bank Nifty strong support at 26100, res at 26500



- Strong pull back across the board despite RBI raising interest rates, Nifty recovered 91 points to end at 10684
- Big pull back across the midcap stocks helped sentiments to recoup, Nifty formed a big white candle
- After two days of big losses, today's reversal looks good, but the index needs to sustain above 10700, above that more recovery towards 10760 can be seen
- On the lower side, 10650 is immediate support while 10620 is crucial support. It looks like markets could remain confined inside a range for now

TRADE WIZARD

SCRIP	B/S	CMP	S/L	Tgt 1	Tgt 2	Remarks
Bajaj Finance	Buy	2160	2135	2190	2210	1 Day
Tata Motors	Buy	296	2923	300	302	1 Day
Bank Baroda	Buy	130	127	135	137	2 Day



PIVOT TABLE

SCRIP	Close	Pivot	S1	S2	S3	R1	R2	R3	% OI Change
BANKNIFTY1	26392	26325	26200	26009	25884	26516	26641	26833	1.64
NIFTY1	10686	10654	10607	10528	10481	10733	10780	10859	0.84
AXISBANK1	532	531	528	524	520	535	538	542	1.50
BAJFINANCE1	2167	2153	2126	2084	2057	2194	2221	2263	5.71
DHFL1	605	605	599	593	586	611	618	624	-2.21
DLF1	201	201	197	193	190	204	208	212	1.16
HDFC1	1861	1856	1847	1832	1824	1870	1879	1893	0.08
HDFCBANK1	2054	2050	2041	2028	2020	2062	2071	2083	-0.24
HINDALCO1	248	246	243	239	236	251	254	258	3.10
IBULHSGFIN1	1182	1176	1156	1131	1111	1201	1221	1246	-0.57
ICICIBANK1	285	285	283	280	277	288	290	293	-0.32
INDUSINDBK1	1917	1908	1890	1863	1845	1935	1953	1979	-0.64
ITC1	271	270	269	267	266	272	273	275	-0.25
RELIANCE1	950	947	942	934	929	955	960	968	0.19
SBIN1	271	269	266	260	257	274	277	282	3.48
TATASTEEL1	582	579	575	567	562	587	592	600	-0.41
VEDL1	248	247	244	240	236	251	254	258	3.78
YESBANK1	341	339	336	331	328	344	347	352	-0.25

Prepared by:
Nirav Vakharia, Head Research

Share India Securities Limited
14, Dayanand Vihar, Near Kakardooma Metro Station, Delhi-110092
research@shareindia.co.in
SEBI Research Analyst Reg no. INH100005011



Disclosure:

We, research team at Share India Securities Ltd. (SISL), authors and the names subscribed to this report, hereby certify that all of the views expressed in this research report accurately reflect our views about the subject issuer(s) or securities. SISL has no material adverse disciplinary history as on the date of publication of this report. We also certify that no part of our compensation was, is, or will be directly or indirectly related to the specific recommendation(s) or view(s) in this report.

Research Analyst or his/her relative or SISL may have any financial interest in the subject company. Also Research Analyst or his relative or SISL or its Associate may have beneficial ownership of 1% or more in the subject company at the end of the month immediately preceding the date of publication of the Research Report. Further Research Analyst or his relative or SISL or its associate does not have any material conflict of interest.

SISL is a SEBI Registered Research Analyst having registration no. INH100005011.

Disclaimer:

This report has been prepared by SISL and is meant for sole use by the recipient and not for circulation. The information and opinions contained herein have been compiled or arrived at, based upon information obtained in good faith from sources believed to be reliable. Such information has not been independently verified and no guaranty, representation of warranty, express or implied, is made as to its accuracy, completeness or correctness. All such information and opinions are subject to change without notice. This document is for information purposes only. Descriptions of any company or companies or their securities mentioned herein are not intended to be complete and this document is not, and should not be construed as an offer or solicitation of an offer, to buy or sell any securities or other financial instruments.

This report is not directed to, or intended for display, downloading, printing, reproducing or for distribution to or use by, any person or entity who is a citizen or resident or located in any locality, state, country or other jurisdiction where such distribution, publication, reproduction, availability or use would be contrary to law or regulation or what would subject SISL or its affiliates to any registration or licensing requirement within such jurisdiction.

If this report is inadvertently sent or has reached any individual in such country, especially, USA, the same may be ignored and brought to the attention of the sender. This document may not be reproduced, distributed or published for any purposes without prior written approval of SISL.

Foreign currencies denominated securities, wherever mentioned, are subject to exchange rate fluctuations, which could have an adverse effect on their value or price, or the income derived from them. In addition, investors in securities such as ADRs, the values of which are influenced by foreign currencies effectively assume currency risk.

It should not be considered to be taken as an offer to sell or a solicitation to buy any security. SISL may from time to time solicit from, or perform broking, or other services for, any company mentioned in this mail and/or its attachments.

SISL and its affiliated company(ies), their directors and employees may; (a) from time to time, have a long or short position in, and buy or sell the securities of the company(ies) mentioned herein or (b) be engaged in any other transaction involving such securities and earn brokerage or other compensation or act as a market maker in the financial instruments of the company(ies) discussed herein or act as an advisor or lender/borrower to such company(ies) or may have any other potential conflict of interests with respect to any recommendation and other related information and opinions.

SISL, its directors, analysts or employees do not take any responsibility, financial or otherwise, of the losses or the damages sustained due to the investments made or any action taken on basis of this report, including but not restricted to, fluctuation in the prices of shares and bonds, changes in the currency rates, diminution in the NAVs, reduction in the dividend or income, etc.

SISL and other group companies, its directors, associates, employees may have various positions in any of the stocks, securities and financial instruments dealt in the report, or may make sell or purchase or other deals in these securities from time to time or may deal in other securities of the companies / organizations described in this report.

SISL or its associates might have managed or co-managed public offering of securities for the subject company or might have been mandated by the subject company for any other assignment in the past twelve months.

SISL or its associates might have received any compensation from the companies mentioned in the report during the period preceding twelve months from the date of this report for services in respect of managing or co-managing public offerings, corporate finance, investment banking or merchant banking, brokerage services or other advisory service in a merger or specific transaction in the normal course of business.

SISL or its analysts did not receive any compensation or other benefits from the companies mentioned in the report or third party in connection with preparation of the research report. Accordingly, neither SISL nor Research Analysts have any material conflict of interest at the time of publication of this report. Compensation of our Research Analysts is not based on any specific merchant banking, investment banking or brokerage service transactions. SISL may have issued other reports that are inconsistent with and reach different conclusion from the information presented in this report.

Research entity has not been engaged in market making activity for the subject company. Research analyst has not served as an officer, director or employee of the subject company. We have not received any compensation/benefits from the subject company or third party in connection with the Research Report.

SISL, SEBI Reg. No.:INB/F/E 231079832, INB/F/E 011079838, IN-DP-32-2015, AMFI Reg. No. ARN: 78041, SEBI Research Analyst Reg. No.: INH100005011, CIN - U67120UP1994PLC050209