

DAILY
MARKET STRATEGIES

Dated: 13-06-2018 18:46

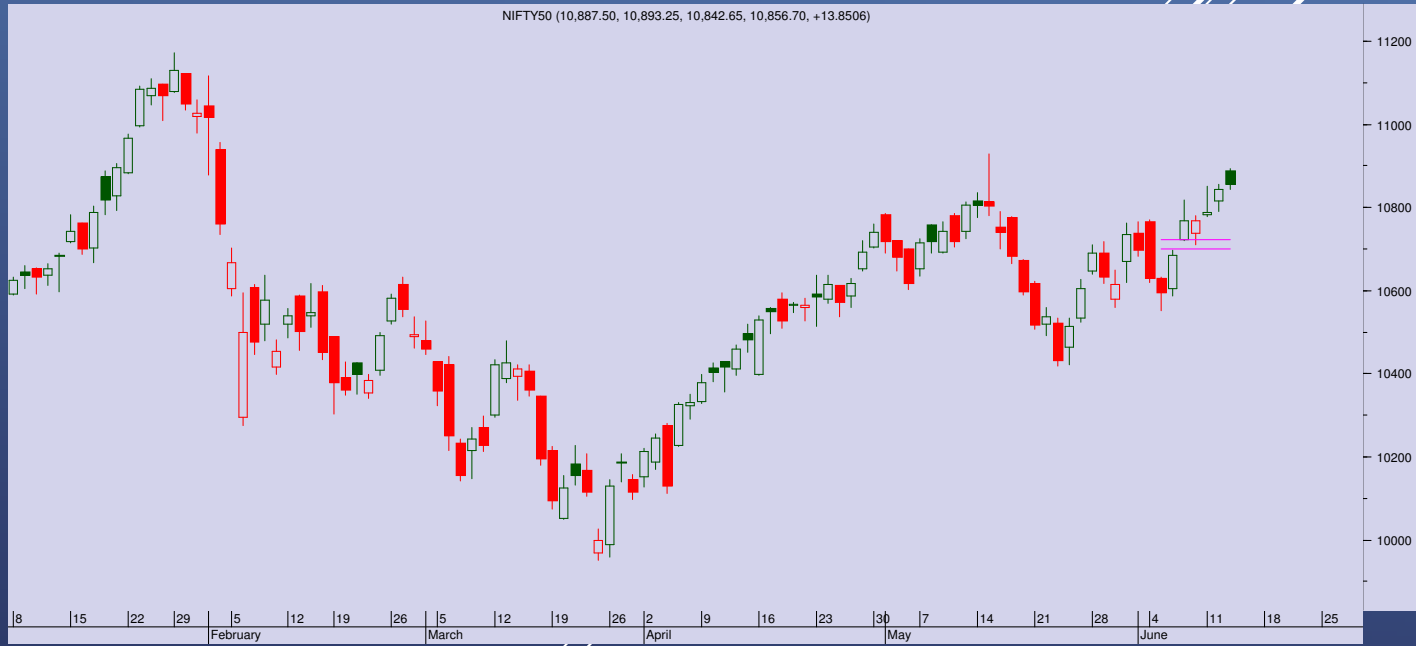
Top Trade

NIFTY – 10856

- Buy on dips around 10830 levels with s/l below 10780

BANKNIFTY - 26607

- Bank Nifty failed to cross 26700, hints as more consolidation, violation of 26400 would be tricky



- A choppy session today near five month high levels, stocks mostly consolidated inside a range. Nifty ended at 10856, gaining 14 points
- Though over last few days, index movement have largely been narrow, it has gained steadily implying a good build up
- Minor consolidation inside 100 point range is likely for couple of days, 10890-10930 is crucial level which would act as a bit of resistance
- 10830 now acts as immediate support while 10780 is strong support for now.

TRADE WIZARD

SCRIP	B/S	CMP	S/L	Tgt 1	Tgt 2	Remarks
Indigo	Buy	1219	1200	1245	1252	1 Day
BPCL	Buy	420	414	428	430	1 day
KSCL	Buy	564	558	572	575	1 Day



PIVOT TABLE

SCRIP	Close	Pivot	S1	S2	S3	R1	R2	R3	% OI Change
BANKNIFTY1	26637	26648	26563	26488	26403	26722	26807	26882	4.45
NIFTY1	10845	10850	10826	10808	10784	10868	10892	10910	3.46
AXISBANK1	542	544	536	529	520	551	560	566	0.97
BAJFINANCE1	2240	2247	2225	2211	2188	2262	2284	2299	-3.07
DHFL1	632	634	621	610	596	645	658	669	-0.65
DLF1	205	205	202	200	198	207	209	212	-1.27
HDFC1	1835	1842	1826	1816	1800	1852	1868	1878	-0.30
HDFCBANK1	2031	2037	2018	2006	1987	2050	2068	2081	3.61
HINDALCO1	244	244	241	237	234	247	251	254	0.34
IBULHSGFIN1	1215	1216	1193	1172	1150	1237	1259	1280	14.27
ICICIBANK1	291	291	288	285	282	294	297	300	2.51
INDUSINDBK1	1934	1938	1925	1916	1903	1947	1961	1970	3.18
ITC1	269	270	267	266	263	271	274	275	3.03
RELIANCE1	997	995	988	980	973	1004	1010	1019	-0.93
SBIN1	287	286	284	281	278	290	292	295	6.16
TATASTEEL1	570	574	563	557	546	581	592	599	2.40
VEDL1	243	244	241	239	236	246	248	250	1.86
YESBANK1	335	335	332	330	327	337	340	342	3.81

Prepared by:
Nirav Vakharia, Head Research

Share India Securities Limited
14, Dayanand Vihar, Near Kakardooma Metro Station, Delhi-110092
research@shareindia.co.in
SEBI Research Analyst Reg no. INH100005011



Disclosure:

We, research team at Share India Securities Ltd. (SISL), authors and the names subscribed to this report, hereby certify that all of the views expressed in this research report accurately reflect our views about the subject issuer(s) or securities. SISL has no material adverse disciplinary history as on the date of publication of this report. We also certify that no part of our compensation was, is, or will be directly or indirectly related to the specific recommendation(s) or view(s) in this report.

Research Analyst or his/her relative or SISL may have any financial interest in the subject company. Also Research Analyst or his relative or SISL or its Associate may have beneficial ownership of 1% or more in the subject company at the end of the month immediately preceding the date of publication of the Research Report. Further Research Analyst or his relative or SISL or its associate does not have any material conflict of interest.

SISL is a SEBI Registered Research Analyst having registration no. INH100005011.

Disclaimer:

This report has been prepared by SISL and is meant for sole use by the recipient and not for circulation. The information and opinions contained herein have been compiled or arrived at, based upon information obtained in good faith from sources believed to be reliable. Such information has not been independently verified and no guaranty, representation of warranty, express or implied, is made as to its accuracy, completeness or correctness. All such information and opinions are subject to change without notice. This document is for information purposes only. Descriptions of any company or companies or their securities mentioned herein are not intended to be complete and this document is not, and should not be construed as an offer or solicitation of an offer, to buy or sell any securities or other financial instruments.

This report is not directed to, or intended for display, downloading, printing, reproducing or for distribution to or use by, any person or entity who is a citizen or resident or located in any locality, state, country or other jurisdiction where such distribution, publication, reproduction, availability or use would be contrary to law or regulation or what would subject SISL or its affiliates to any registration or licensing requirement within such jurisdiction.

If this report is inadvertently sent or has reached any individual in such country, especially, USA, the same may be ignored and brought to the attention of the sender. This document may not be reproduced, distributed or published for any purposes without prior written approval of SISL.

Foreign currencies denominated securities, wherever mentioned, are subject to exchange rate fluctuations, which could have an adverse effect on their value or price, or the income derived from them. In addition, investors in securities such as ADRs, the values of which are influenced by foreign currencies effectively assume currency risk.

It should not be considered to be taken as an offer to sell or a solicitation to buy any security. SISL may from time to time solicit from, or perform broking, or other services for, any company mentioned in this mail and/or its attachments.

SISL and its affiliated company(ies), their directors and employees may; (a) from time to time, have a long or short position in, and buy or sell the securities of the company(ies) mentioned herein or (b) be engaged in any other transaction involving such securities and earn brokerage or other compensation or act as a market maker in the financial instruments of the company(ies) discussed herein or act as an advisor or lender/borrower to such company(ies) or may have any other potential conflict of interests with respect to any recommendation and other related information and opinions.

SISL, its directors, analysts or employees do not take any responsibility, financial or otherwise, of the losses or the damages sustained due to the investments made or any action taken on basis of this report, including but not restricted to, fluctuation in the prices of shares and bonds, changes in the currency rates, diminution in the NAVs, reduction in the dividend or income, etc.

SISL and other group companies, its directors, associates, employees may have various positions in any of the stocks, securities and financial instruments dealt in the report, or may make sell or purchase or other deals in these securities from time to time or may deal in other securities of the companies / organizations described in this report.

SISL or its associates might have managed or co-managed public offering of securities for the subject company or might have been mandated by the subject company for any other assignment in the past twelve months.

SISL or its associates might have received any compensation from the companies mentioned in the report during the period preceding twelve months from the date of this report for services in respect of managing or co-managing public offerings, corporate finance, investment banking or merchant banking, brokerage services or other advisory service in a merger or specific transaction in the normal course of business.

SISL or its analysts did not receive any compensation or other benefits from the companies mentioned in the report or third party in connection with preparation of the research report. Accordingly, neither SISL nor Research Analysts have any material conflict of interest at the time of publication of this report. Compensation of our Research Analysts is not based on any specific merchant banking, investment banking or brokerage service transactions. SISL may have issued other reports that are inconsistent with and reach different conclusion from the information presented in this report.

Research entity has not been engaged in market making activity for the subject company. Research analyst has not served as an officer, director or employee of the subject company. We have not received any compensation/benefits from the subject company or third party in connection with the Research Report.

SISL, SEBI Reg. No.:INB/F/E 231079832, INB/F/E 011079838, IN-DP-32-2015, AMFI Reg. No. ARN: 78041, SEBI Research Analyst Reg. No.: INH100005011, CIN - U67120UP1994PLC050209