

Daily

MARKET STRATEGIES



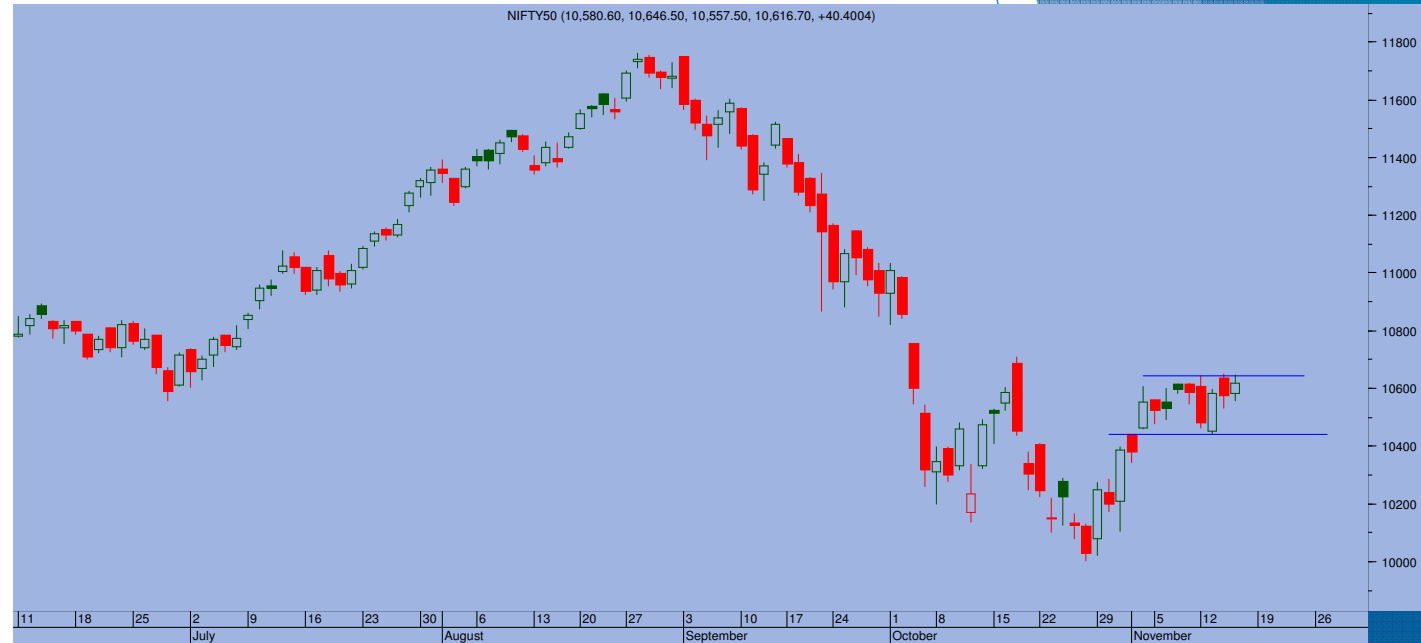
Top Trade

NIFTY - 10616

Buy Nifty abv 10630 s/l blw 10580 tgt 10700-10740

BANKNIFTY - 26155

Buy Bank Nifty abv 26200 S/l blw 26000 tgt 26450-26500



- Strong move by the Nifty bank lifted the spirits up. Nifty had a minor but firm move towards 10650 intraday and ended at 10616, gaining 40 points
- A small white candle formed today has again turned the tide in favor of bulls. However, one needs to wait for Nifty to cross 10650 decisively in a day or two
- Above 10650, index would test the 200 EMA at 10700. Given the break out in Banknifty above 200 DMA, it is highly likely that Nifty too would cross the crucial MA
- Beyond 10700, 10760 is next level. On the lower side, 10540 is immediate support.

TRADE WIZARD

SCRIP	B/S	CMP	S/L	Tgt 1	Tgt 2	Remarks
M&M Fin1 Fut	Buy	444	439	450	454	1 Day
HDFC1 Fut	Buy	1860	1845	1880	1890	1 Day
Adani Port1 Fut	Buy	346	342	352	355	1 Day

PIVOT POINTS

SCRIP	Close	Pivot	S1	S2	S3	R1	R2	R3	OI Change
BANKNIFTY1	26196	26119	25982	25769	25632	26333	26470	26683	11.01
NIFTY1	10631	10632	10584	10538	10490	10678	10726	10772	-0.31
AXISBANK1	626	624	614	601	590	637	647	660	-2.63
BAJFINANCE1	2348	2332	2309	2270	2247	2371	2394	2433	-1.78
DHFL1	244	240	232	220	213	252	259	271	3.47
DLF1	171	168	165	159	156	174	178	183	4.13
HDFC1	1859	1851	1838	1816	1803	1873	1886	1908	0.28
HDFCBANK1	1980	1974	1966	1952	1944	1988	1996	2010	-3.25
HINDALCO1	234	231	228	222	219	237	240	246	-3.46
IBULHSGFIN1	370	369	363	357	351	375	381	387	1.20
ICICIBANK1	1517	1519	1500	1482	1463	1536	1555	1573	-0.05
INDUSINDBK1	657	658	648	638	628	667	677	686	-1.52
INFOSYS1	1098	1097	1090	1082	1075	1105	1112	1120	1.08
RELIANCE1	287	286	283	279	276	289	292	296	2.00
SBIN1	590	591	583	575	567	598	607	614	-3.04
TATASTEEL1	1877	1883	1859	1841	1816	1901	1926	1944	-0.36
VEDL1	208	207	204	200	197	212	215	219	3.90
YESBANK1	206	209	200	193	184	216	225	232	4.63



Prepared by:
Nirav Vakharia, Head Research
Share India Securities Limited
14, Dayanand Vihar, Near Kakardooma Metro Station, Delhi-110092
Email: research@shareindia.co.in
SEBI Research Analyst Reg no. INH100005011



Disclosure:

We, research team at Share India Securities Ltd. (SISL), authors and the names subscribed to this report, hereby certify that all of the views expressed in this research report accurately reflect our views about the subject issuer(s) or securities. SISL has no material adverse disciplinary history as on the date of publication of this report. We also certify that no part of our compensation was, is, or will be directly or indirectly related to the specific recommendation(s) or view(s) in this report.

Research Analyst or his/her relative or SISL may have any financial interest in the subject company. Also Research Analyst or his relative or SISL or its Associate may have beneficial ownership of 1% or more in the subject company at the end of the month immediately preceding the date of publication of the Research Report. Further Research Analyst or his relative or SISL or its associate does not have any material conflict of interest.

SISL is a SEBI Registered Research Analyst having registration no. INH100005011.

Disclaimer:

This report has been prepared by SISL and is meant for sole use by the recipient and not for circulation. The information and opinions contained herein have been compiled or arrived at, based upon information obtained in good faith from sources believed to be reliable. Such information has not been independently verified and no guaranty, representation of warranty, express or implied, is made as to its accuracy, completeness or correctness. All such information and opinions are subject to change without notice. This document is for information purposes only. Descriptions of any company or companies or their securities mentioned herein are not intended to be complete and this document is not, and should not be construed as an offer or solicitation of an offer, to buy or sell any securities or other financial instruments.

This report is not directed to, or intended for display, downloading, printing, reproducing or for distribution to or use by, any person or entity who is a citizen or resident or located in any locality, state, country or other jurisdiction where such distribution, publication, reproduction, availability or use would be contrary to law or regulation or what would subject SISL or its affiliates to any registration or licensing requirement within such jurisdiction.

If this report is inadvertently sent or has reached any individual in such country, especially, USA, the same may be ignored and brought to the attention of the sender. This document may not be reproduced, distributed or published for any purposes without prior written approval of SISL.

Foreign currencies denominated securities, wherever mentioned, are subject to exchange rate fluctuations, which could have an adverse effect on their value or price, or the income derived from them. In addition, investors in securities such as ADRs, the values of which are influenced by foreign currencies effectively assume currency risk.

It should not be considered to be taken as an offer to sell or a solicitation to buy any security. SISL may from time to time solicit from, or perform broking, or other services for, any company mentioned in this mail and/or its attachments.

SISL and its affiliated company(ies), their directors and employees may; (a) from time to time, have a long or short position in, and buy or sell the securities of the company(ies) mentioned herein or (b) be engaged in any other transaction involving such securities and earn brokerage or other compensation or act as a market maker in the financial instruments of the company(ies) discussed herein or act as an advisor or lender/borrower to such company(ies) or may have any other potential conflict of interests with respect to any recommendation and other related information and opinions.

SISL, its directors, analysts or employees do not take any responsibility, financial or otherwise, of the losses or the damages sustained due to the investments made or any action taken on basis of this report, including but not restricted to, fluctuation in the prices of shares and bonds, changes in the currency rates, diminution in the NAVs, reduction in the dividend or income, etc.

SISL and other group companies, its directors, associates, employees may have various positions in any of the stocks, securities and financial instruments dealt in the report, or may make sell or purchase or other deals in these securities from time to time or may deal in other securities of the companies / organizations described in this report.

SISL or its associates might have managed or co-managed public offering of securities for the subject company or might have been mandated by the subject company for any other assignment in the past twelvemonths.

SISL or its associates might have received any compensation from the companies mentioned in the report during the period preceding twelve months from t date of this report for services in respect of managing orco-managing public offerings, corporate finance, investment banking or merchant banking, brokerage services or other advisory service in a merger or specific transaction in the normal course of business.

SISL or its analysts did not receive any compensation or other benefits from the companies mentioned in the report or third party in connection with preparation of the research report. Accordingly, neither SISL nor Research Analysts have any material conflict of interest at the time of publication of this report. Compensation of our Research Analysts is not based on any specific merchant banking, investment banking or brokerage service transactions. SISL may have issued other reports that are inconsistent with and reach different conclusion from the information presented in this report.