

Daily

MARKET STRATEGIES



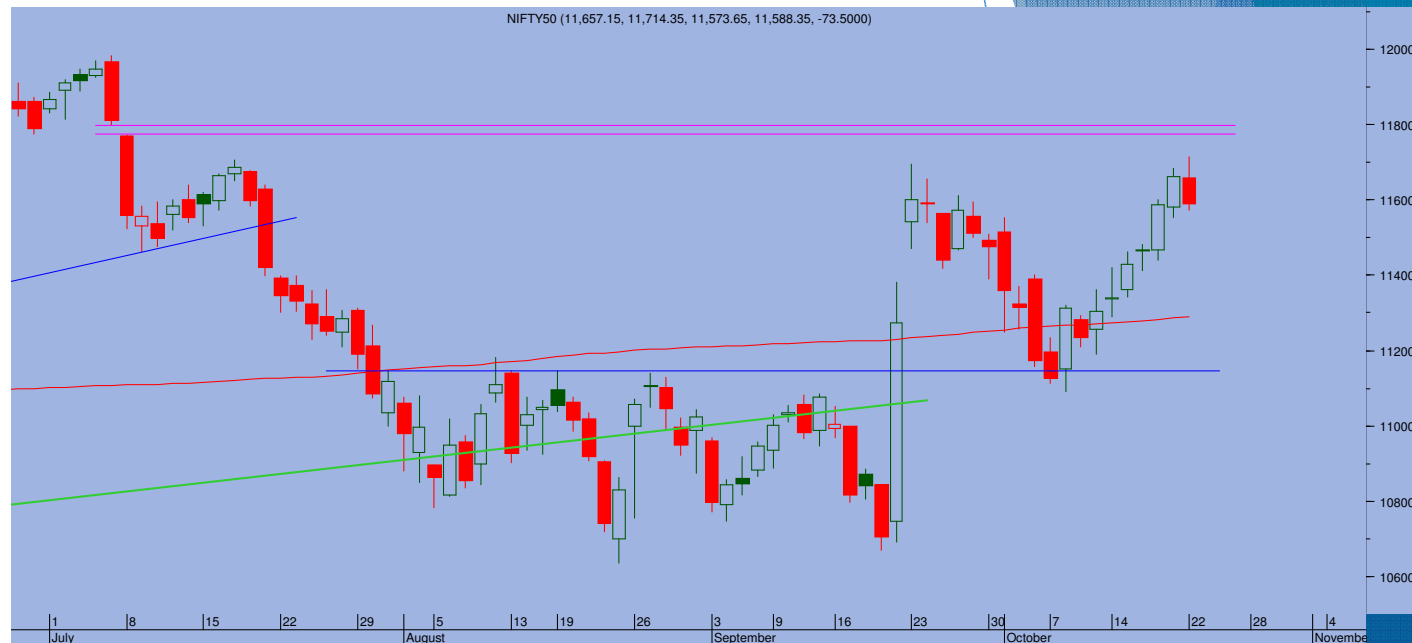
Top Trade

NIFTY - 11588

Sup 11550-11515 Res 11620-11660

BANKNIFTY - 29411

Sup 29250-29100 Res 29550-29700



- Expectedly, market entered a minor consolidation mode as profit booking at higher levels eased some of the gains. Nifty ended at 11588, losing 73 points
- Profit booking at higher levels pulled the stocks lower and Nifty ended sharply lower forming a black candle. Infosys was the main culprit, losing almost 15% on a whistle blower report.
- It looks like that the index could continue to trade inside a minor range for next few days and consolidate.
- Immediately, 11550 is a support level. Below that the index could see 11515 range. On the higher side, above 11620, the index can move towards 11660 range.

TRADE WHIZARD

Scrip	B/S	Rate	S/L	Tgt1	Tgt2	Remarks
Petronet 1 Fut	Buy	275	271	280	284	1 Day
Jindal Steel1 Fut	Sell	104	105.5	102	101	1 Day
Tata Chem1 Fut	Buy	618	612	625	630	1 Day

PIVOT POINTS

Security Name	CMP	Pivot	S1	S2	S3	R1	R2	R3	OI %
BANKNIFTY 1	29493	29364	28980	28468	28085	29876	30259	30771	-3.01
NIFTY 1	11624	11648	11581	11537	11470	11691	11759	11802	9.53
AXISBANK 1	715	715	705	695	685	725	735	745	-0.79
BAJFINANCE1	4050	4100	3966	3881	3747	4185	4319	4404	1.77
HDFC 1	2121	2120	2097	2073	2049	2144	2168	2192	-0.90
HDFC BANK - 1	1244	1244	1233	1221	1210	1255	1266	1278	-6.11
HINDALCO 1	186	188	184	181	178	190	194	196	0.56
ICICI BANK - 1	452	450	440	428	418	462	472	484	-1.24
INDUSINDBK 1	1341	1341	1321	1300	1280	1362	1382	1403	-0.99
INFY1 1	638	652	619	601	568	670	703	721	33.55
KOTAKBANK 1	1635	1623	1604	1573	1553	1654	1674	1704	0.88
MARUTI 1	7283	7309	7225	7168	7085	7366	7450	7507	0.22
RELIANCE 1	1419	1421	1405	1391	1375	1435	1450	1465	0.11
SBI 1	271	272	268	265	261	275	279	282	-1.29
TATASTEEL 1	355	358	351	347	340	362	369	373	-0.53
TCS - 1	2056	2071	2027	1998	1955	2100	2143	2172	-2.31
VEDL 1	149	150	147	145	142	152	155	157	0.80
YESBANK 1	52	53	49	46	43	56	59	62	-12.26



Prepared by:
Nirav Vakharia, Head Research
Share India Securities Limited
14, Dayanand Vihar, 1 Kakardooma Metro Station, Delhi-110092
Email: research@shareindia.co.in
SEBI Research Analyst Reg no. INH100005011

Disclosure:

We, research team at Share India Securities Ltd. (SISL), authors and the names subscribed to this report, hereby certify that all of the views expressed in this research report accurately reflect our views about the subject issuer(s) or securities. SISL has no material adverse disciplinary history as on the date of publication of this report. We also certify that no part of our compensation was, is, or will be directly or indirectly related to the specific recommendation(s) or view(s) in this report.

Research Analyst or his/her relative or SISL may have any financial interest in the subject company. Also Research Analyst or his relative or SISL or its Associate may have beneficial ownership of 1% or more in the subject company at the end of the immediately preceding the date of publication of the Research Report. Further Research Analyst or his relative or SISL or its associate does not have any material conflict of interest.

SISL is a SEBI Registered Research Analyst having registration no. INH100005011.

Disclaimer:

This report has been prepared by SISL and is meant for sole use by the recipient and not for circulation. The information and opinions contained herein have been compiled or arrived at, based upon information obtained in good faith from sources believed to be reliable. Such information has not been independently verified and no guaranty, representation of warranty, express or implied, is made as to its accuracy, completeness or correctness. All such information and opinions are subject to change without notice. This document is for information purposes only. Descriptions of any company or companies or their securities mentioned herein are not intended to be complete and this document is not, and should not be construed as an offer or solicitation of an offer, to buy or sell any securities or other financial instruments.

This report is not directed to, or intended for display, downloading, printing, reproducing or for distribution to or use by, any person or entity who is a citizen or resident or located in any locality, state, country or other jurisdiction where such distribution, publication, reproduction, availability or use would be contrary to law or regulation or what would subject SISL or its affiliates to any registration or licensing requirement within such jurisdiction.

If this report is inadvertently sent or has reached any individual in such country, especially, USA, the same may be ignored and brought to the attention of the sender. This document may not be reproduced, distributed or published for any purposes without prior written approval of SISL.

Foreign currencies denominated securities, wherever mentioned, are subject to exchange rate fluctuations, which could have an adverse effect on their value or price, or the income derived from them. In addition, investors in securities such as ADRs, the values of which are influenced by foreign currencies effectively assume currency risk.

It should not be considered to be taken as an offer to sell or a solicitation to buy any security. SISL may from time to time solicit from, or perform broking, or other services for, any company mentioned in this mail and/or its attachments.

SISL and its affiliated company(ies), their directors and employees may; (a) from time to time, have a long or short position in, and buy or sell the securities of the company(ies) mentioned herein or (b) be engaged in any other transaction involving such securities and earn brokerage or other compensation or act as a market maker in the financial instruments of the company(ies) discussed herein or act as an advisor or lender/borrower to such company(ies) or may have any other potential conflict of interests with respect to any recommendation and other related information and opinions.

SISL, its directors, analysts or employees do not take any responsibility, financial or otherwise, of the losses or the damages sustained due to the investments made or any action taken on basis of this report, including but not restricted to, fluctuation in the prices of shares and bonds, changes in the currency rates, diminution in the NAVs, reduction in the dividend or income, etc.

SISL and other group companies, its directors, associates, employees may have various positions in any of the stocks, securities and financial instruments dealt in the report, or may make sell or purchase or other deals in these securities from time to time or may deal in other securities of the companies / organizations described in this report.

SISL or its associates might have managed or co-managed public offering of securities for the subject company or might have been mandated by the subject company for any other assignment in the past twelvemonths.

SISL or its associates might have received any compensation from the companies mentioned in the report during the period preceding twelve months from t date of this report for services in respect of managing or co-managing public offerings, corporate finance, investment banking or merchant banking, brokerage services or other advisory service in a merger or specific transaction in the normal course of business.

SISL or its analysts did not receive any compensation or other benefits from the companies mentioned in the report or third party in connection with preparation of the research report. Accordingly, neither SISL nor Research Analysts have any material conflict of interest at the time of publication of this report. Compensation of our Research Analysts is not based on any specific merchant banking, investment banking or brokerage service transactions. SISL may have issued other reports that are inconsistent with and reach different conclusion from the information presented in this report.