

Dated: 22-04-2020 19:57

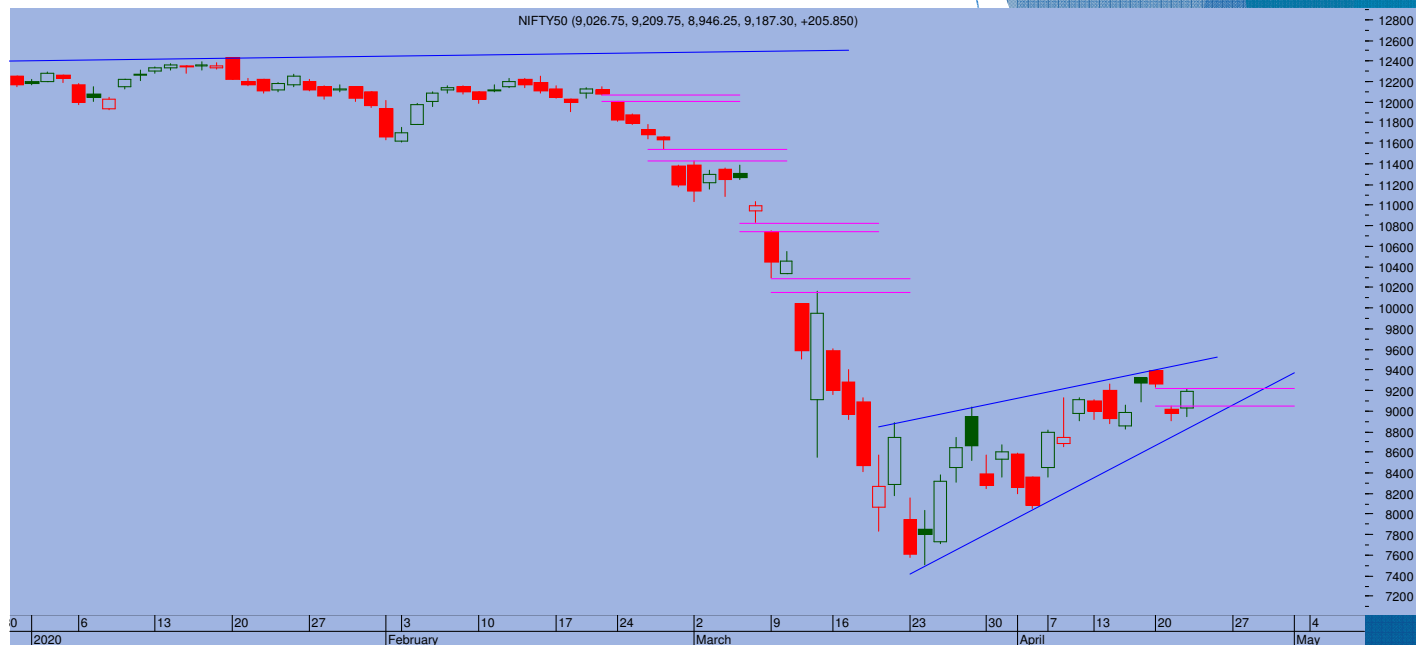
Top Trade

NIFTY - 9187

Sup 9050-8900 Res 9250-9400

BANKNIFTY - 19702

Sup 19450-19500 Res 20000-20400



- Markets surged higher led by Reliance Ind and short covering ahead of the weekly settlement tomorrow. Nifty gained 205 points to end at 9187
- Today's bounce back was on the anticipated lines given yesterday's huge falling gap range, ably aided by market heavy weight Rel Ind. Nifty entered well into the gap range, crossing 9200 through the day. The white candle formation hints positivity but the structure points towards weakness in coming days. As pointed out earlier, the recent recovery is a rising wedge formation and it bears Bearish implication.
- Over next couple of days, market is expected to show a definitive break out of the prevailing range. For now, Nifty is expected to continue to move higher and test 9250. Sustaining beyond, it can again move towards 9400 which is a crucial resistance
- 9200-9050 is a no trading zone. The lower range is important support. On violation of the lower trend line support, weakness is expected to open up.

TRADE WHIZARD

Scrip	B/S	Rate	S/L	Tgt1	Tgt2	Remarks
Divis Lab1 Fut	Buy	2388	2350	2440	2470	1 Day
Escorts1 Fut	Buy	752	745	762	770	1 Day
Indogo1 Fut	Sell	963	975	940	930	1 Day

PIVOT POINTS

Security Name	CMP	Pivot	S1	S2	S3	R1	R2	R3	OI %
*BANKNIFTY 1	19677	19506	19174	18670	18338	20009	20342	20845	-2.99
*NIFTY1 1	9188	9114	9008	8827	8721	9294	9400	9581	-2.65
AXISBANK 1	432	426	417	402	393	441	450	465	-2.03
BHARTIARTL 1	502	503	490	478	465	515	528	540	-3.90
BPCL 1	358	352	344	329	321	366	374	388	0.23
HDFC 1	1666	1658	1636	1606	1585	1688	1709	1739	-1.93
HDFC BANK - 1	927	922	910	892	880	939	951	969	-0.93
HPCL 1	214	213	208	202	197	219	224	230	0.03
ICICI BANK - 1	337	333	327	318	312	343	349	358	-0.65
INDUSINDBK 1	417	408	394	372	359	430	443	466	0.54
INFY1 1	643	639	632	621	614	650	657	668	-2.45
KOTAKBANK 1	1156	1145	1120	1085	1060	1181	1205	1241	-8.01
LT 1	854	864	842	829	807	876	898	910	-0.68
MARUTI - 1	5182	5140	5026	4870	4756	5296	5410	5567	-1.45
REL INDS 1	1362	1347	1313	1263	1229	1397	1431	1481	-7.84
SBI 1	189	187	183	178	175	192	195	200	-12.38
TATASTEEL 1	269	266	261	253	248	274	278	286	-0.53
TCS - 1	1768	1760	1729	1690	1659	1799	1830	1869	-2.49



Prepared by:
Nirav Vakharia, Head Research
Share India Securities Limited
14, Dayanand Vihar, 1 Kakardooma Metro Station, Delhi-110092
Email: research@shareindia.co.in
SEBI Research Analyst Reg no. INH100005011

Disclosure:

We, research team at Share India Securities Ltd. (SISL), authors and the names subscribed to this report, hereby certify that all of the views expressed in this research report accurately reflect our views about the subject issuer(s) or securities. SISL has no material adverse disciplinary history as on the date of publication of this report. We also certify that no part of our compensation was, is, or will be directly or indirectly related to the specific recommendation(s) or view(s) in this report.

Research Analyst or his/her relative or SISL may have any financial interest in the subject company. Also Research Analyst or his relative or SISL or its Associate may have beneficial ownership of 1% or more in the subject company at the end of the immediately preceding the date of publication of the Research Report. Further Research Analyst or his relative or SISL or its associate does not have any material conflict of interest.

SISL is a SEBI Registered Research Analyst having registration no. INH100005011.

Disclaimer:

This report has been prepared by SISL and is meant for sole use by the recipient and not for circulation. The information and opinions contained herein have been compiled or arrived at, based upon information obtained in good faith from sources believed to be reliable. Such information has not been independently verified and no guaranty, representation of warranty, express or implied, is made as to its accuracy, completeness or correctness. All such information and opinions are subject to change without notice. This document is for information purposes only. Descriptions of any company or companies or their securities mentioned herein are not intended to be complete and this document is not, and should not be construed as an offer or solicitation of an offer, to buy or sell any securities or other financial instruments.

This report is not directed to, or intended for display, downloading, printing, reproducing or for distribution to or use by, any person or entity who is a citizen or resident or located in any locality, state, country or other jurisdiction where such distribution, publication, reproduction, availability or use would be contrary to law or regulation or what would subject SISL or its affiliates to any registration or licensing requirement within such jurisdiction.

If this report is inadvertently sent or has reached any individual in such country, especially, USA, the same may be ignored and brought to the attention of the sender. This document may not be reproduced, distributed or published for any purposes without prior written approval of SISL.

Foreign currencies denominated securities, wherever mentioned, are subject to exchange rate fluctuations, which could have an adverse effect on their value or price, or the income derived from them. In addition, investors in securities such as ADRs, the values of which are influenced by foreign currencies effectively assume currency risk.

It should not be considered to be taken as an offer to sell or a solicitation to buy any security. SISL may from time to time solicit from, or perform broking, or other services for, any company mentioned in this mail and/or its attachments.

SISL and its affiliated company(ies), their directors and employees may; (a) from time to time, have a long or short position in, and buy or sell the securities of the company(ies) mentioned herein or (b) be engaged in any other transaction involving such securities and earn brokerage or other compensation or act as a market maker in the financial instruments of the company(ies) discussed herein or act as an advisor or lender/borrower to such company(ies) or may have any other potential conflict of interests with respect to any recommendation and other related information and opinions.

SISL, its directors, analysts or employees do not take any responsibility, financial or otherwise, of the losses or the damages sustained due to the investments made or any action taken on basis of this report, including but not restricted to, fluctuation in the prices of shares and bonds, changes in the currency rates, diminution in the NAVs, reduction in the dividend or income, etc.

SISL and other group companies, its directors, associates, employees may have various positions in any of the stocks, securities and financial instruments dealt in the report, or may make sell or purchase or other deals in these securities from time to time or may deal in other securities of the companies / organizations described in this report.

SISL or its associates might have managed or co-managed public offering of securities for the subject company or might have been mandated by the subject company for any other assignment in the past twelvemonths.

SISL or its associates might have received any compensation from the companies mentioned in the report during the period preceding twelve months from t date of this report for services in respect of managing or co-managing public offerings, corporate finance, investment banking or merchant banking, brokerage services or other advisory service in a merger or specific transaction in the normal course of business.

SISL or its analysts did not receive any compensation or other benefits from the companies mentioned in the report or third party in connection with preparation of the research report. Accordingly, neither SISL nor Research Analysts have any material conflict of interest at the time of publication of this report. Compensation of our Research Analysts is not based on any specific merchant banking, investment banking or brokerage service transactions. SISL may have issued other reports that are inconsistent with and reach different conclusion from the information presented in this report.